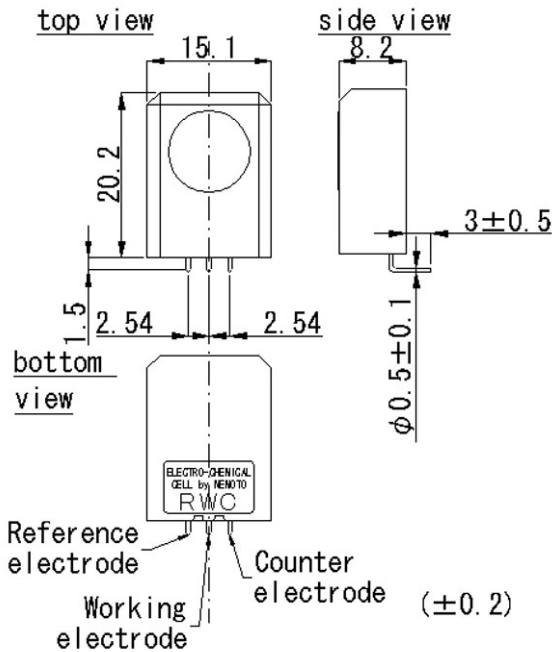
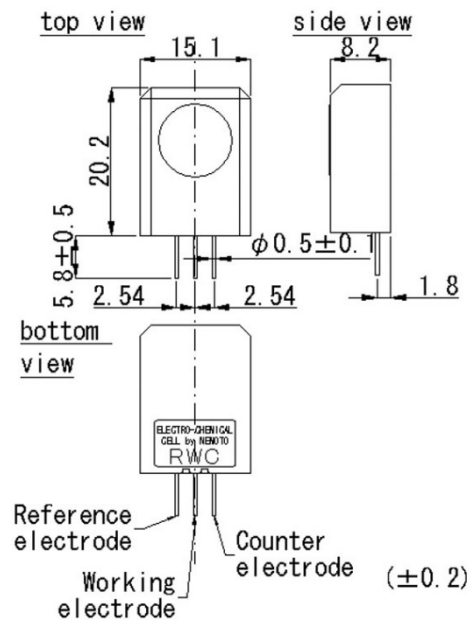


## NAP-550

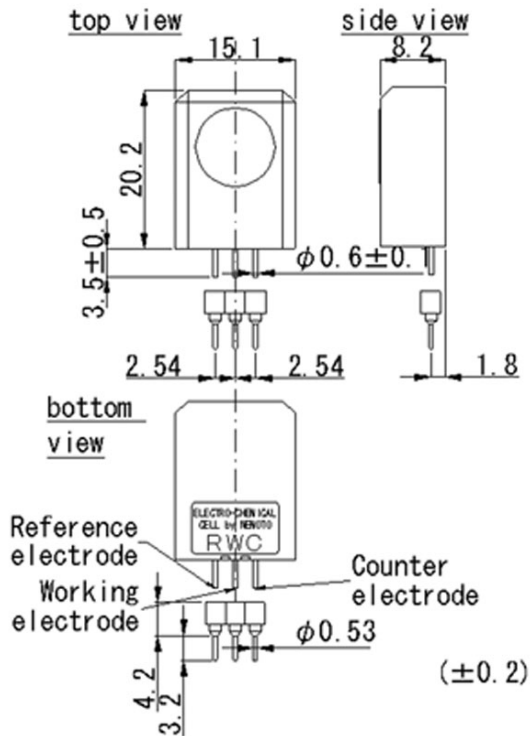
NAP-550 is a newly developed NO<sub>2</sub> sensor for the gas alarm in the underground parking areas. Output signal of NO<sub>2</sub> sensor is opposite side of general reductive gases, however the signal is quite linear to gas concentration.



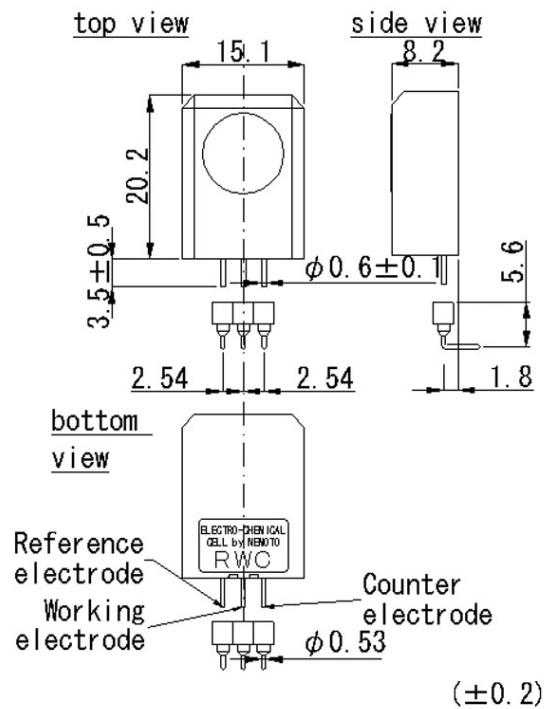
Structure of NAP-550R



Structure of NAP-550S



Structure of NAP-550SS



Structure of NAP-550RS

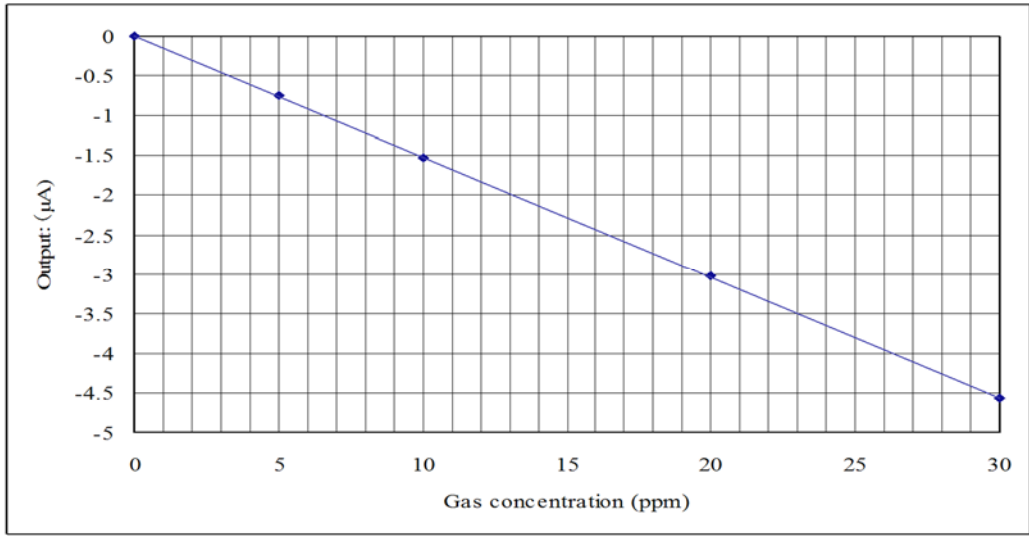


Fig. Gas sensitivity of NAP-550

• Characteristics

Detection range	NO <sub>2</sub> 0 ~ 30ppm	Zero point drift	Below 2ppm(-20~50°C)
Output current	1.5 ± 0.3uA/ppm NO <sub>2</sub>	Temp. and hum.	-20~50°C、15-90%RH
Repeatability	Less than ±2%	Span drift	Less than 5%/year
Response time	T90 : less than 30sec.	Expected lifetime	2 years